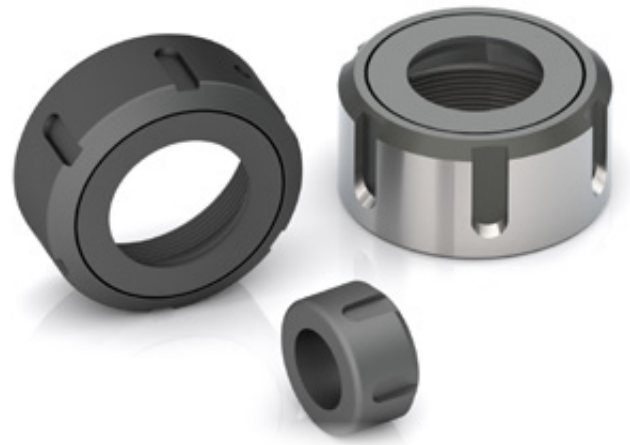


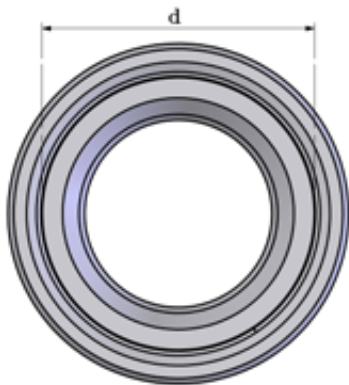
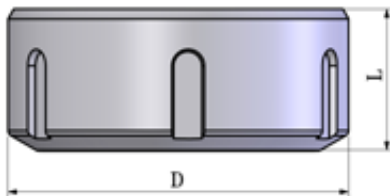
GER / GEO



Ghiere per mandrini

Collet nuts

Überwurfmutter



CODICE	Tipo	D	L	d	Rot.
GER32D	DIN 6499 (ER 32)	50	23	M40x1.5	RH
GER32S	DIN 6499 (ER 32)	50	23	M40x1.5	LH
GER40D	DIN 6499 (ER 40)	63	25	M50x1.5	RH
GER40S	DIN 6499 (ER 40)	63	25	M50x1.5	LH
GER25CU	DIN 6499 (ER 25) Cuscinetto	42	20	M32x1.5	RH
GER32CU	DIN 6499 (ER 32) Cuscinetto	50	26	M40x1.5	RH
GER40CU	DIN 6499 (ER 40) Cuscinetto	63	29	M50x1.5	RH
GER25D	DIN 6499 (ER 25)	42	20	M32x1.5	RH
GER20D	DIN 6499 (ER 20)	35	19	M25x1.5	RH
GER16D	DIN 6499 (ER 16)	32	17.5	M22x1.5	RH
GEOC25	DIN 6388 (EOC 25)	60	30	M48x2	RH
GEOC25CU	DIN 6388 (EOC 25) Cuscinetto	60	30	M48x2	RH