



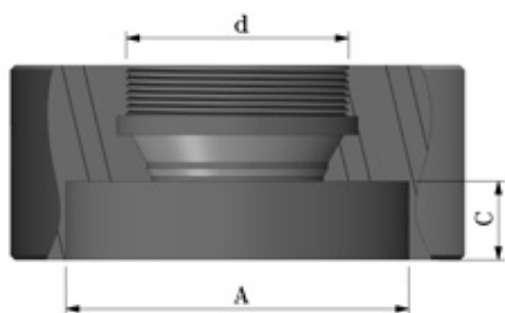
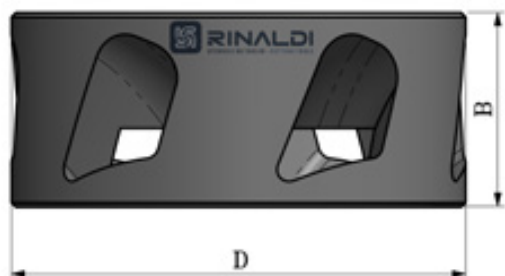
Ghiera convogliatore - G 2.5 20.000 g/min

Dust and chips extraction clamping nut - G 2.5 20.000 g/min

Überwurfmutter mit Spanentsorgungssystem - G 2.5 20.000 g/min



CODICE "ghiera Singola"	CODICE "KIT" Ghiera + Chiave	Tipo	D	A	B	C	d	Rot.
AGC-ER3298	KIT-ER3298 (AGC-ER3298 + CHC-D98)	DIN 6499 (ER 32)	98	74	42	17	M40x1.5	RH
AGC-ER4098	KIT-ER4098 (AGC-ER4098 + CHC-D98)	DIN 6499 (ER 40)	98	74	42	17	M50x1.5	RH
AGC-EOC2598	KIT-EOC2598 (AGC-EOC2598 + CHC-D98)	DIN 6499 (EOC25)	98	74	42	17	M48x2	RH
AGC-ER3280	KIT-ER3280 (AGC-ER3280 + CHC-D80)	DIN 6499 (ER 32)	80	64	42	13	M40x1.5	RH



CODICE	Tipo	D
CHC-D98	DIN 6499 (ER 32/ER40/EOC25)	95-100
CHC-D80	DIN 6499 (ER 32)	80-90



FACILE DA MONTARE
MIGLIORE ASPIRAZIONE DI POLVERI E TRUCIOLI DURANTE LA LAVORAZIONE DI NESTING E PANTOGRAFATURA

EASY MOUNTING
BETTER DUST AND CHIPS EVACUATION DURING NESTING AND CONVENTIONAL CNC ROUTING OPERATIONS

EINFACHE MONTAGE
BESSERE STAUB-UND SPANENTSORGUNG WÄHREND NESTING UND HERKÖMMLICHEN CNC-FRÄSARBEITEN

