

# LEGENDA



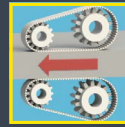
**ALTRE MISURE SU RICHIESTA**  
OTHER DIMENSIONS ON REQUEST  
ANDERE ABMESSUNGEN AUF ANFRAGE



**ELEVATA VELOCITA' DI TAGLIO**  
HIGH CUTTING SPEED  
HOHE VORSCHUBGESCHWINDIGKEIT



**BUONA FINITURA**  
GOOD FINISH  
GUTE FERTIGBEARBEITUNG



**AVANZAMENTO MECCANICO**  
MECHANIC FEED  
MECHANISCHER VORSCHUB



**EVAQUAZIONE ELEVATA DEL TRUCIOLO VERSO L'ALTO**  
INCREASED UPWARD CHIP EJECTION  
GROSSE SPÄNEABFÜHRUNG NACH OBEN



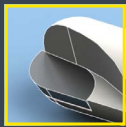
**AFFILATURA DI TESTA AL CENTRO PER FORARE**  
ULTRA FAST DRILLING END  
STIRNSEITIGER ANSCHLIFF ZUM EINBOHREN



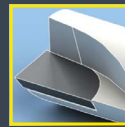
**FORATURA E FRESATURA**  
COMBINATION DRILLING-MILLING  
BOHR-FRÄSEN



**METALLO DURO HW-K10**  
HW-K10 HARD METAL  
HW-K10 HARTMETALL



**INSERTI IN "PKD" RAGGIATI**  
"PKD" CUTTING PLATES WITH RADIUS  
PKD - SCHNEIDEPLATTEN MIT RADIUS



**INSERTI IN "PKD" DIRITTI**  
STRAIGHT "PKD" CUTTING PLATES  
GERADE PKD-SCHNEIDEPLATTEN



**LAPPATURA INTERNA ED ESTERNA**  
INSIDE AND OUTSIDE POLISHED FLUTE  
POLIERTE SCHNEIDE AUF DER INNEN-UND AURENSEITE



**VELOCITA' DI ROTAZIONE**  
RPM  
DREHZAHL



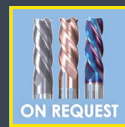
**VELOCITA' DI ROTAZIONE**  
RPM  
DREHZAHL



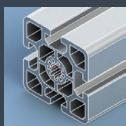
**ROTAZIONE DESTRA**  
RIGHT-HAND ROTATION  
RECHTSLAUF



**ROTAZIONE DESTRA POSITIVA**  
RIGHT-HAND ROTATION POSITIVE SPIRAL  
RECHTSLAUF MIT POSITIVER SPIRALE



**RIVESTIMENTI A PAG. 22**  
COATINGS ON PAGE 22  
BESCHICHTUNGEN AUF SEITE 22



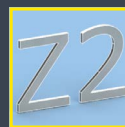
**INDICATE PER PROFILATI E SCATOLATI**  
SUITABLE FOR ALUMINIUM PROFILES  
FÜR ALUMINIUMPROFILIEN ANGEGBEN



Z1



**MAGGIORE FINITURA SUPERFICIALE**  
HIGHER FINISH  
BESSERE FERTIGBEARBEITUNG



Z2



**RIDOTTO ATTRITO DURANTE LA LAVORAZIONE**  
REDUCED FRICTION  
REDUZIERTER REIBUNGSWIDERSTAND



Z3