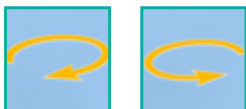
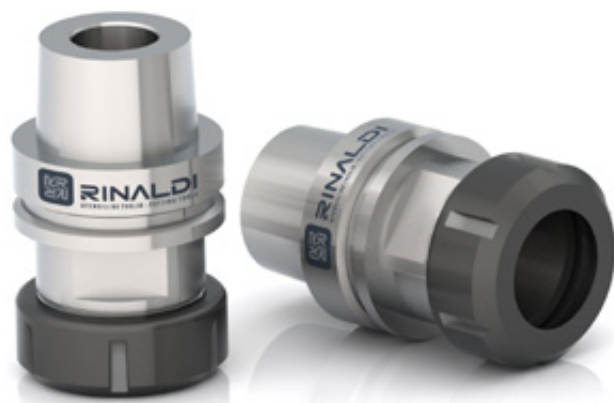


# AME

## Portautensili cono HSK tipo "E"

Collet chucks HSK type "E"

Spannzangenfutter HSK Typ "E"



CODICE	L	D	D1	Rot	Pinze	Ghiera	CONO
AME-7650D	76	50	63	RH	ø2..ø20 (art. PER32 ER32)	art. GER32D ER32	HSK-63-E
AME-7663D	76	63	63	RH	ø2..ø30 (art. PER40 ER40)	art. GER40D ER40	HSK-63-E

